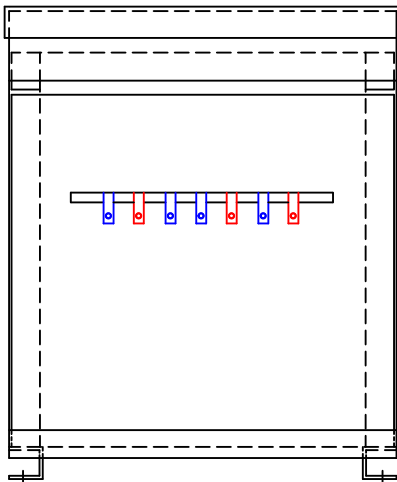


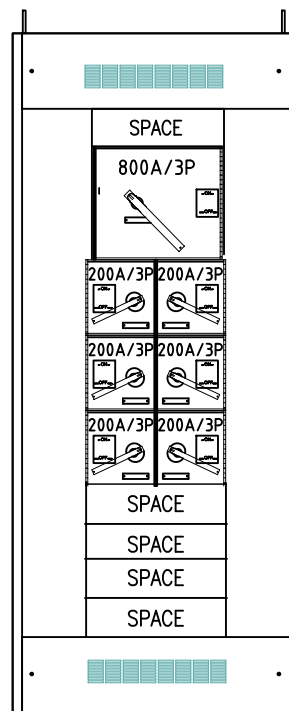
TYPICAL INSTALLATION

NOTES:

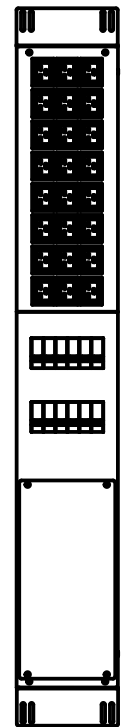
1. ALL ITEMS ARE DESIGNED & MANUFACTURED IN ACCORDANCE WITH INDUSTRY STANDARDS.
 - TRANSFORMER is cUL LISTED
 - SWITCHBOARD is UL LISTED
 - PDU is ETL & CSA LISTED
2. ALL ITEMS ARE NEMA-1 ENCLOSED FOR INDOOR USE.
3. ALL ITEMS ARE CONSTRUCTED BASED UPON OPERATION IN 40°C AMBIENT ENVIRONMENT.
4. ALL ITEMS ARE RATED/SIZED BASED UPON 3850 WATT MINERS.
5. MAINTAIN 1" CLEARANCE FROM ALL LIVE PARTS.
6. PAINT COLOR ARE AS FOLLOWS:
 - TRANSFORMER is ANSI 61 (LIGHT GREY)
 - SWITCHBOARD is ANSI ?
 - PDU is FLAT BLACK



TRANSFORMER

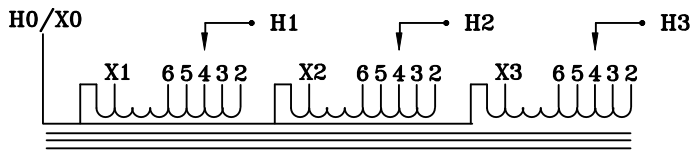


SWITCHBOARD



PDU

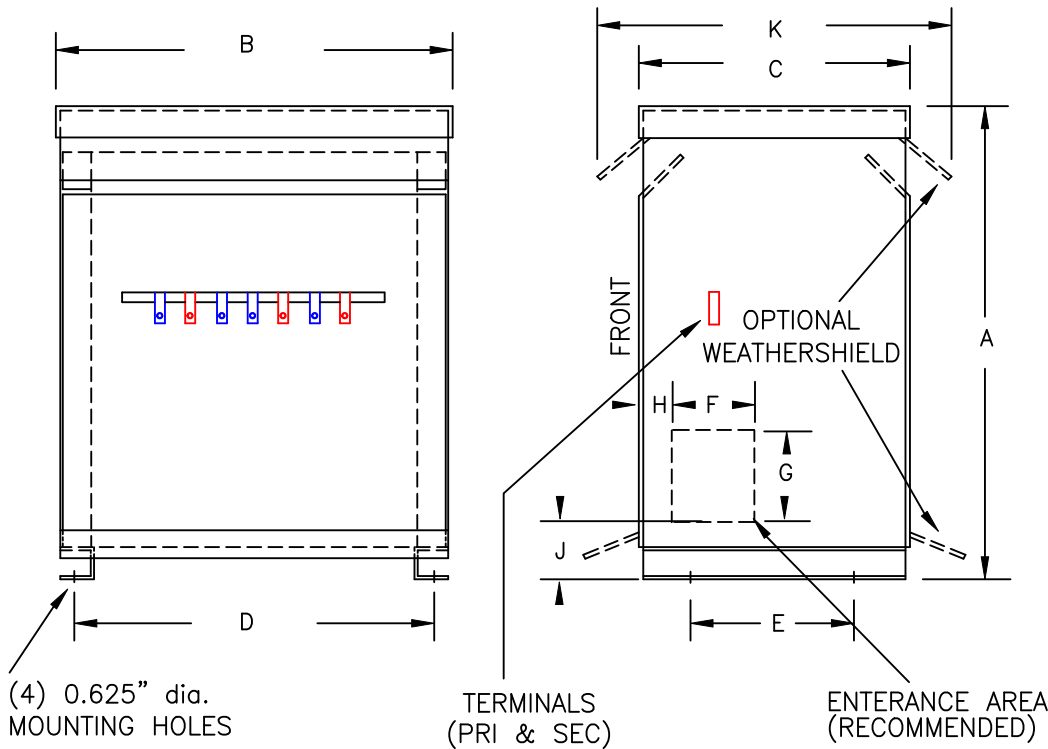
CAPACITY RATING	500 KVA	CAPACITY RATING	800 AMPS	QUANTITY of PDUs	(6) CRYPTO MINOTAUR PDUs
INPUT VOLTAGE	3-PHASE, 480V, 3-WIRE	INPUT VOLTAGE	3-PHASE, 415V, 4-WIRE	** Ratings BELOW are per MINOTAUR **	
INPUT CURRENT	601 AMPS	INPUT CURRENT	696 AMPS	INPUT VOLTAGE	3-PHASE, 415V, 5-WIRE
INPUT ENTRANCE	BOTTOM (or) SIDE	INPUT ENTRANCE	TOP (or) SIDE	INPUT CURRENT	128 AMPS
INPUT CABLES	(3) 250 MCM per PHASE	INPUT CABLES	(3) 350 MCM per PHASE	INPUT CABLES	(1) #2/0 per PHASE (1) 350MCM for GRD & NEU
OUTPUT VOLTAGE	3-PHASE, 415V, 4-WIRE	MAIN SWITCH	(1) 800A (FUSED)	OUTPUT VOLTAGE	1-PHASE, 240V, 2-WIRE
OUTPUT CURRENT	696 AMPS	FEEDER SWITCH	(6) 150A (FUSED)	OUTPUT CURRENT	384 AMPS
OUTPUT EXIT	BOTTOM (or) SIDE	OUTPUT EXIT	BOTTOM (or) SIDE	OUTPUT PROTECTION	(12) 50A CIRCUIT BREAKERS
OUTPUT CABLES	(3) 350 MCM per PHASE	OUTPUT per FEEDER	(1) #2/0 per PHASE	OUTPUT CONNECTION	(24) C19 RECEPTACLES
OVERALL DIMENSIONS	46H x 32W x 28D	OVERALL DIMENSIONS	90H x 38W x 24D	OVERALL DIMENSIONS	42H x 6W x 4D



TYPICAL WIRING DIAGRAM

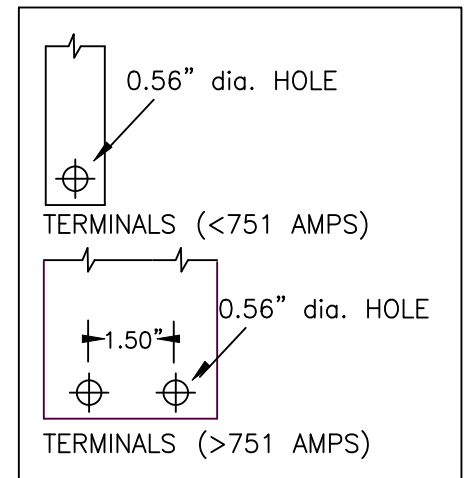
NOTES:

1. ALL UNITS ARE cUL LISTED & DESIGNED ACCORDANCE WITH INDUSTRY STANDARDS.
2. TRANSFORMERS ARE DRY-TYPE, CLASS AA, VENTILATED NEMA 2 ENCLOSED FOR INDOOR USE.
3. TRANSFORMERS ARE FLOOR MOUNTED.
4. AVAILABLE ACCESSORIES FOR THIS UNIT:
A) OUTDOOR WEATHERSHIELD KIT
B) WALL MOUNTING BRACKETS
5. TRANSFORMERS ARE CONSTRUCTED BASED UPON A 40°C AMBIENT ENVIRONMENT.
6. MAINTAIN 1" CLEARANCE FROM ALL LIVE PARTS.
7. PAINT COLOR IS ANSI #61.



FRONT VIEW

SIDE VIEW



TERMINAL DETAILS

(4) 0.625" dia. MOUNTING HOLES

TERMINALS (PRI & SEC)

ENTERANCE AREA (RECOMMENDED)

APPROXIMATE DIMENSIONS (INCHES)

KVA	A	B	C	D	E	F	G	H	J	K	ENCLOSURE	WEIGHT	WEATHER SHIELD	TERMINAL TYPE
500.0	46.00	32.00	28.00	30.25	24.75	6.00	10.00	1.00	9.00	32.12	3PT-150K	960	WS-10B	BUSBAR

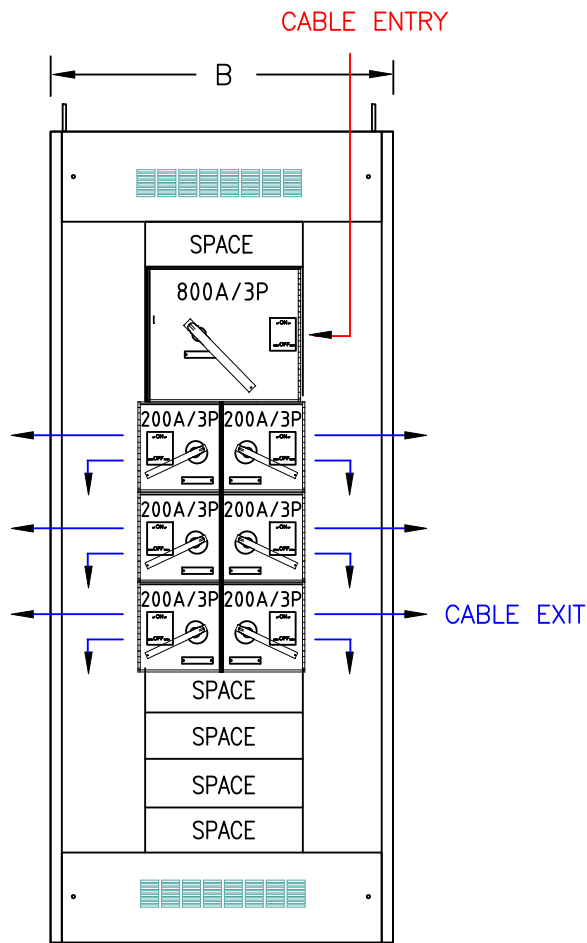
* ELECTROSTATIC SHIELD GROUNDED TO TRANSFORMER CASE AT FACTORY (IF APPLICABLE)

DRAWINGS
 APPROVAL
 RECORD
 OTHER

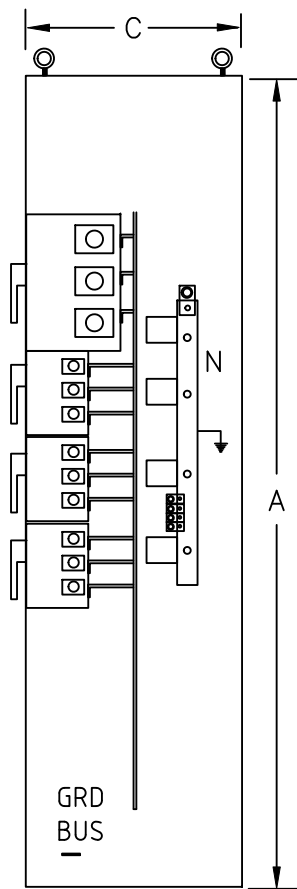
INPUT VOLTAGE	480	CUST:	RAPTOR POWER SYSTEMS		
OUTPUT VOLTAGE	415Y/240	JOB			
TEMPERATURE RISE IN °C	150	CATALOG	RPS3-500K-480-N1 (RPS3-500K-480-N3 w/WS-10B)		
WINDINGS & TERMINALS	<input checked="" type="checkbox"/> ALUMINUM <input type="checkbox"/> COPPER	NOTE	XXXXXXXX		
FREQUENCY IN HERTZ	60	BY	ENG. LOG.	TITLE 3-PHASE, 600 VOLT CLASS AUTO DRY TYPE TRANSFORMER	
OUTPUT TAPS	456, 504	DATE			
		REV	MFG. LOG.	DWG. NO. 3PT578PA500	
		DATE:	DWG. FILE		

NOTES:

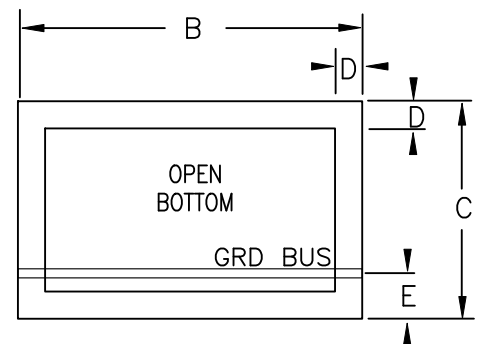
1. ALL UNITS ARE UL891 LISTED & DESIGNED FOR DISTRIBUTION CLASS APPLICATIONS.
2. SWITCHBOARDS ARE DEADFRONT, FUSIBLE HOUSED WITHIN NEMA-1 ENCLOSURE FOR INDOOR INSTALLATION.
3. ALL SWITCHBOARDS ARE SUPPLIED WITH MECHANICAL LUGS & POWER FUSES.
4. SWITCHBOARDS ARE CONSTRUCTED WITH 10AWG FRAME & 14AWG PANELS.
5. MAINTAIN 1" CLEARANCE FROM ALL LIVE PARTS.
6. PAINT COLOR IS ANSI 61 (LIGHT GREY).



FRONT VIEW



RIGHT-SIDE



BOTTOM VIEW

APPROXIMATE DIMENSIONS (INCHES)

FUSE BOARD	A	B	C	D	E	F	G	H	J	K	L	M	ENCLOSURE	WEIGHT
800 AMPS	90.00	38.00	24.00	3.00	5.00	----	----	----	----	----	----	----	PM-903824	950

DRAWINGS
 APPROVAL
 RECORD
 OTHER

SUPPLY VOLTAGE	415Y/240	INPUT LUGS (per PHASE)	(2) 500 MCM	CUST.	
SYSTEM SUPPLY	3-P, 4-WIRE	MAIN BUS SWITCH	1x 800A (FUSIBLE)	JOB	
MAIN BUS BRACING	65 kA	FEEDER SWITCH	6x 200A (FUSIBLE)	MAIN: (1) SIEMENS #HCP367H (3-P, 800A, 200 kAIC w/800A FUSES)	
VERTICAL BUS	1200 AMPS	ENCLOSURE RATING	NEMA-1	FEEDER: (3) SIEMENS #V7F3644 (3-P, 200A, 200 kAIC w/150E FUSES)	
HORIZONTAL BUS	-----	INPUT CONNECTION	SIDE (or) TOP	BY	TITLE 3-PHASE, 600 VOLT CLASS FUSIBLE DEADFRONT SWITCHBOARD
NEUTRAL BUS	1200 AMPS	OUTPUT CONNECTION	SIDE (or) BOTTOM	DATE	
				REV	
				DATE:	DWG. NO.



PTFSB-800A6F